

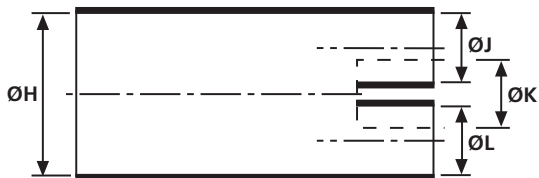
3-Way Outlet Shapes, VG style

• Helashrink 300 Series

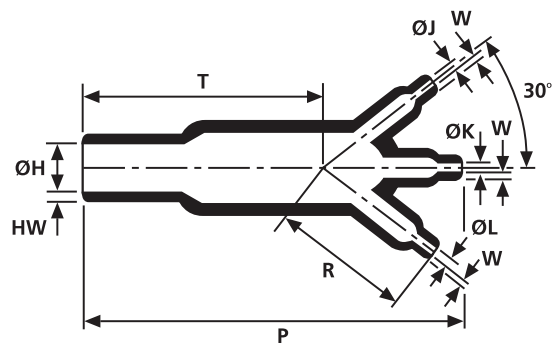
This style provides cable strain relief and mechanical protection at harness transition points, all outlets are clearly marked to aid orientation on installation.



304-1-G supplied / fully recovered.



a: Expanded form (supplied)



b: Fully recovered form (after heating)

Sizes and Type Table										
Type	Designation as per VG-Norm	ØH min. a	ØH max. b	ØJ/K/L min. a	ØJ/K/L max. b	P ± 10%	R ± 10%	HW ± 20%	W ± 20%	T ± 10%
306-1	VG95343T08D001A	13.0	6.5	6.5	3.5	46.0	25.4	1.3	1.0	20.3
304-1	VG95343T08D002A	27.0	13.5	13.0	7.0	93.0	50.3	2.5	1.5	42.9
310-1	VG95343T08D003A	38.5	19.0	19.0	10.0	135.0	73.7	3.1	1.8	61.0
311-1	VG95343T08D004A	55.5	25.5	27.0	12.5	192.0	103.1	4.6	3.1	88.9

All dimensions in mm. Subject to technical changes.

Combinations "On request"					
Adhesive	Material				
	B7	G	J	H	L
WM250	√	√	√	√	-
W8	√	√	√	√	-
W24	√	√	√	√	√
V9500	√	√	√	√	-
HMT200A	√	√	√	√	-
W21	-	-	-	√	-
Without Adhesive	√	√	√	√	√

Standard combinations	
Article-No.	Type
403-06180	306-1-G
403-04180	304-1-G
403-10180	310-1-G
403-11180	311-1-G

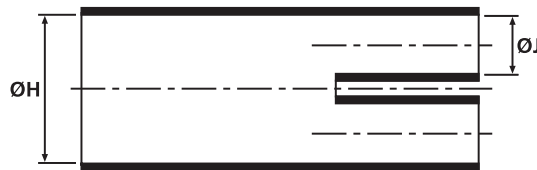
3-Way Outlet Shapes, Breakout Boots

- Helashrink 300 Series, in line, low voltage

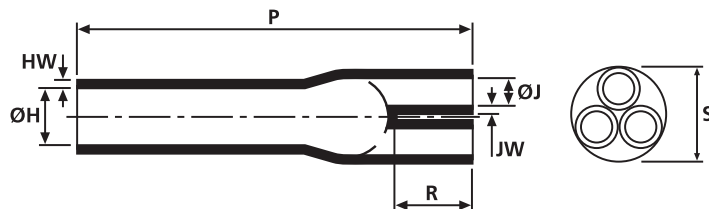
Branching parts are used for easy, time-saving insulation of the branch point of a cable where it is split into single wires. Branching parts with hot melt adhesive also serve to relieve the mechanical tension in cable harnesses.



300 Series supplied / fully recovered.



a: Expanded form (supplied)



b: Fully recovered form (after heating)

For Material / Adhesive selection and other information please refer to page 10.

Sizes and Type Table									
Type	ØH min. a	ØH max. b	ØJ min. a	ØJ max. b	P ± 10%	R ± 10%	HW ± 20%	JW ± 20%	S nom
318-1	23.0	9.1	9.0	3.0	76.5	20.0	2.5	2.5	16.0
339-2	39.0	12.7	17.0	4.1	102.0	56.0	2.9	2.9	26.0
319-1	31.0	17.5	13.0	4.6	93.5	28.5	2.9	2.9	23.0
328-2	44.0	22.8	21.0	7.6	99.0	34.0	3.8	3.8	-
342-1	110.0	35.0	40.0	17.5	230.0	45.0	4.0	3.5	65.0
330-2	61.0	35.5	32.0	12.7	144.5	45.5	3.8	3.8	47.0
340-2	82.0	50.8	36.0	19.1	144.5	45.5	4.5	4.5	65.0
341-1	125.0	59.0	50.8	25.4	283.0	71.0	3.8	3.8	75.0

All dimensions in mm. Subject to technical changes.

Combinations "On request"					
Adhesive	Material				
	B7	G	H	B8	J
W	√	√	√	√	√
W2	√	√	√	√	-
WM250	√	√	√	√	√
V9500	√	√	-	-	√
HMT200A	√	√	-	√	√
W21	-	-	√	-	√
Without Adhesive	√	√	√	√	√

Standard combinations	
Article-No.	Type
403-18018	318-1-G
403-39017	339-2-G
403-19022	319-1-G
403-28015	328-2-J
403-42006	342-1-B8W2
403-30014	330-2-B7WM250
403-41005	341-1-B8W2