

Bottle Shapes, MIL style

- Helashrink 100 Series, with rib

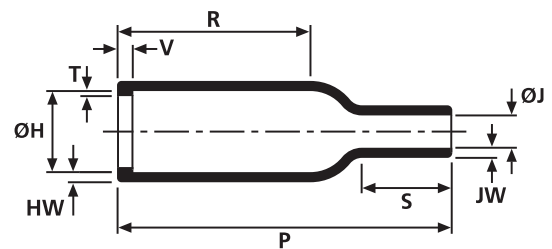
This style is used in conjunction with a circular grooved adaptor providing strain relief and environmental sealing when used in conjunction with one of our complementary adhesives.



104-4 supplied / fully recovered.



a: Expanded form (supplied)



b: Fully recovered form (after heating)

Sizes and Type Table												
Type	ØH min. a	ØH max. b	ØJ min. a	ØJ max. b	P ± 10%	R ± 10%	HW ± 20%	JW ± 20%	V ± 10%	T ± 20%	S nom	
1030-4	12.0	9.8	6.0	2.0	19.0	8.0	1.0	0.5	1.5	0.5	4.6	
1031-4	12.0	9.8	6.0	2.0	15.0	4.0	1.0	0.5	1.5	0.5	4.6	
1037-4	9.0	5.6	9.0	2.0	19.0	9.0	1.0	0.6	1.5	0.6	4.5	
1009-1	9.0	5.6	4.0	3.2	27.0	14.0	1.0	0.5	1.6	0.9	7.5	
113-4	10.7	7.9	4.6	2.0	25.4	14.5	1.3	1.0	3.0	1.0	4.6	
104-4	16.5	7.9	16.5	3.8	25.4	14.2	1.3	1.3	3.0	1.0	6.9	
105-4	23.4	10.4	23.4	5.6	38.1	14.2	1.5	1.5	3.0	1.0	10.2	
106-4	31.0	14.2	31.0	6.6	55.4	22.9	1.8	1.8	3.0	1.0	10.2	
101-4	31.0	17.8	31.0	7.1	67.0	38.1	2.0	2.0	3.0	1.0	17.8	
102-4	36.1	22.4	36.1	8.4	73.7	43.2	1.8	1.8	3.0	1.0	21.0	
103-4	42.7	28.2	42.7	9.9	99.1	54.0	2.0	2.0	3.0	1.7	24.0	
107-4	51.9	35.1	51.9	15.8	124.5	66.0	3.1	3.1	3.0	1.7	40.6	
118-4	66.0	44.4	66.0	20.3	160.5	91.4	3.8	3.8	3.0	2.0	48.3	

All dimensions in mm. Subject to technical changes.

For Material / Adhesive selection and other information please refer to page 10.

Combinations "On request"					
Adhesive	Material				
	B7	G	J	H	L
WM250	√	√	√	√	-
W8	√	√	√	√	-
W24	√	√	√	√	√
W21	√	√	√	√	-
HMT200A	√	√	√	√	-
V9500	√	√	√	√	-
Without Adhesive	√	√	√	√	√

Standard combinations	
Article-No.	Type
410-30480	1030-4-G
410-31001	1031-4-G
410-37001	1037-4-G
410-09001	1009-1-G
401-13480	113-4-G
401-04024	104-4-G
401-05034	105-4-G
401-06036	106-4-G
401-01037	101-4-G
401-02031	102-4-G
401-03041	103-4-G
401-07030	107-4-G
401-18018	118-4-B7

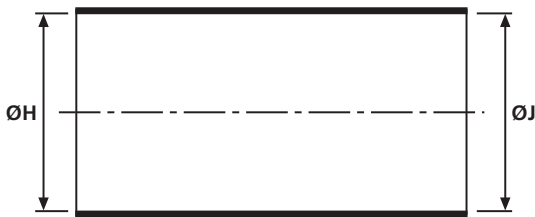
Bottle Shapes

• Helashrink 100 Series, without rib

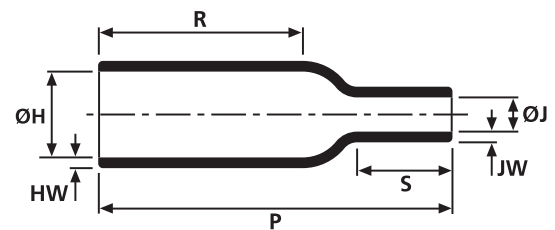
This style provides connector cable strain relief. Can be installed on the connector rear thread or plain shaft and allows easy re-entry for repair when combined with a hot melt adhesive.



109-1-G supplied / fully recovered.



a: Expanded form (supplied)



b: Fully recovered form (after heating)

Sizes and Type Table

Type	ØH min. a	ØH max. b	ØJ min. a	ØJ max. b	P ± 10%	R max.	HW ± 20%	JW ± 30%	S nom
104-1	16.5	7.9	16.5	3.8	25.4	14.2	1.3	1.3	6.9
104-2	10.7	7.9	8.4	3.8	25.4	14.2	1.3	1.3	6.9
105-1	23.4	10.4	23.4	5.6	38.1	22.9	1.5	1.5	10.2
106-1	31.0	14.2	31.0	6.6	55.4	26.5	1.8	1.8	16.5
106-2	19.3	14.2	14.2	6.6	55.4	26.5	1.8	1.8	16.5
101-1	31.0	17.8	31.0	7.1	66.0	38.1	2.0	2.0	17.8
101-2	23.9	17.8	15.5	7.1	66.0	38.1	2.0	2.0	17.8
102-1	36.1	22.4	36.1	8.4	73.7	43.2	1.8	1.8	17.8
102-2	30.0	22.4	18.0	8.4	73.7	43.2	1.8	1.8	17.8
1006-1	40.0	20.0	20.0	6.0	78.8	30.0	1.5	1.0	20.0
103-1	42.7	28.2	42.7	9.9	95.5	54.0	2.0	2.0	24.0
103-2	37.8	28.2	21.3	9.9	95.5	54.0	2.0	2.0	24.0
107-1	51.9	35.1	51.9	15.8	124.5	66.0	3.1	3.1	40.6
107-2	46.9	35.1	35.6	15.8	124.5	66.0	3.1	3.1	40.6
118-1	66.0	44.4	66.0	20.3	150.0	80.0	3.8	3.8	48.3
119-1	86.4	57.2	86.4	26.6	209.6	118.1	4.6	4.6	61.0
113-1	10.7	7.9	4.6	2.0	25.4	14.5	1.3	1.0	4.6
113-2	21.6	7.9	5.8	2.0	25.4	14.5	1.3	1.3	4.6
108-1	13.7	10.4	6.6	3.1	38.1	22.9	1.5	1.0	7.6
108-2	27.9	10.4	7.9	3.1	38.1	22.9	1.5	1.0	7.6
109-1	19.3	14.2	8.1	4.1	53.3	35.6	2.0	1.3	7.6
109-2	38.1	14.2	11.7	4.1	53.3	35.6	2.0	1.3	7.6
110-1	23.9	17.8	11.7	5.6	63.5	38.1	2.5	1.5	12.7
110-2	50.8	17.8	17.0	5.6	63.5	38.1	2.5	1.5	12.7
111-1	30.0	22.4	14.7	7.1	76.2	43.2	3.1	1.8	15.2
111-2	63.5	22.4	21.3	7.1	76.2	43.2	3.1	1.8	15.2
116-1	59.4	44.5	43.7	20.8	158.8	91.4	5.6	4.6	41.9

All dimensions in mm. Subject to technical changes.

Bottle Shapes

- Helashrink 100 Series, without rib



109-1-G supplied / fully recovered.

Combinations "On request"

Adhesive	Material				
	B7	G	J	H	L
WM250	√	√	√	√	-
W8	√	√	√	√	-
W24	√	√	√	√	√
V9500	√	√	√	√	-
HMT200A	√	√	√	√	-
W21	-	-	-	√	-
Without Adhesive	√	√	√	√	-

Standard combinations

Article-No.	Type
401-04006	104-1-G
401-04017	104-2-G
401-05005	105-1-G
401-06005	106-1-G
401-06023	106-2-G
401-01006	101-1-G
401-01026	101-2-G
401-02005	102-1-G
401-02020	102-2-G
410-06006	1006-1-B7
401-03006	103-1-G
401-03024	103-2-B7
401-07006	107-1-G
401-07016	107-2-B7
401-18005	118-1-G
401-19001	119-1-B7
401-13180	113-1-G
401-13011	113-2-G
401-08001	108-1-B7
401-08016	108-2-G
401-09002	109-1-B7
401-09011	109-2-G
401-10005	110-1-G
401-10011	110-2-G
401-11003	111-1-J
401-11011	111-2-G
401-16007	116-1-B7.

For Material / Adhesive selection and other information please refer to page 10.