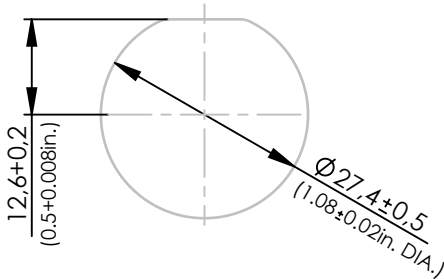
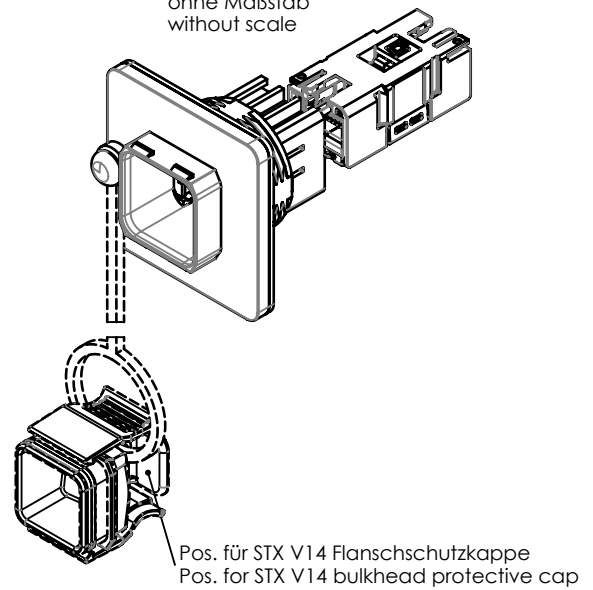


**Einbaumaße / Mounting dimensions
Profinet / Industrial AIDA**



Materialdicke 1mm bis 5mm
wall thickness 1mm to 5mm (0.039-0.197 in.)

ohne Maßstab
without scale



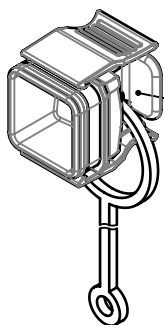
| Bestell-Nr. Order no | Bezeichnung Description | Barcode EAN 13 | VPE PU |
|-------------------------|--|-------------------|-----------|
| J80020A0012 | STX V14 Zentralverschr. Flanschset RJ45 Kupplung Cat.6 Klasse E _A M STX V14 central bulkhead set RJ45 coupler Cat.6 Class E _A M | 4018359360153 | 1 |

| Bestell-Nr. Order no | Verpackung Packing | VPE PU | Karton Carton | UPE OPU | Karton Carton | UPE OPU | Karton Outer carton |
|-------------------------|-----------------------|-----------------|------------------|------------------|------------------|------------|------------------------|
| J80020A0012 | 1 pc. in PE bag | 1 pc. in PE bag | - | 10 pcs in carton | 245x170x80 [mm] | - | - |

| Änd./ rev. index | Änderungs-Nr. / revision code | Datum / date | Name / name | Datum / date | Name / name | Gewicht / weight [g] |
|------------------------|----------------------------------|-----------------|--|---|-------------------------------|---|
| | | | | 14.06.2011 | AS | |
| | | | | 12.07.2011 | SK | ca./approx. |
| | | | Maßstab / scale | Benennung / title | | |
| | | | 1:1 | STX V14 central bulkhead set RJ45 coupler Cat.6 Class E _A M | | |
| | | | Unterl./ dim. without tolerances according to | Unterl./ doc. type | Zeichnungsnr./ drawing no. | |
| a | 26601 | 04.03.2015 | AS | D | J80020A0012 | Maße/ dimensions: mm Original : DIN A4 Blatt/ sheet 1 von/ of 4 |

Optional

ohne Maßstab
without scale



STX V14 Flanschschutzkappe muss separat bestellt werden.
STX V14 bulkhead protective cap need to be ordered separately.

| Bestell-Nr. Order no | Bezeichnung Description | Farbe Colour | Verpackung Packing |
|-------------------------|---------------------------------|-----------------|-----------------------|
| H80030A0007 | STX V14 bulkhead protective cap | schwarz / black | 1 Stück / 1piece |


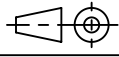
| Änd./ rev. index | Änderungs-Nr. / revision code | Datum/ date | Name/ name | Datum/ date | Name/ name | Gewicht/ weight [g] | |
|------------------------|----------------------------------|----------------|---------------|-------------------------|---------------|---|--|
| | | | | 14.06.2011 | AS | | |
| | | | | 12.07.2011 | SK | ca./approx. | |
| | | | | Maßstab/ scale | | Benennung/ title | |
| | | | | 1:1 | | STX V14 central bulkhead set RJ45 coupler Cat.6 Class E _A M | |
| | | | | Unterl./doc. type | | Zeichnungsnr./ drawing no. | |
| | | | | D | | J80020A0012 | |
| | | | | Ersatz für/ replaces | | | |
| | | | | | | Telegärtner | |
| | | | | | | Maße/ dimensions: mm | |
| | | | | | | Original : DIN A4 | |
| | | | | | | Blatt/ sheet 2 von/ of 4 | |

Technische Daten / Technical Data

| | | |
|--|--|--|
| Schutzgehäuse-Norm | IEC 61076-3-117 | Protective Housing Standard |
| Steckverbinder-Norm | IEC60603-7-5 | Connector Standard |
| Mechanische Eigenschaften | | Mechanical Characteristics |
| Lebensdauer (Steckzyklen RJ45 ,RJ12, RJ11) | ≥ 750 | Life (mating cycles RJ45, RJ12, RJ11) |
| Werkstoffe | | Materials |
| Flanschgehäuse V14 | Zinkdruckguss, vernickelt zinc diecast, Ni-plated | Bulkhead housing V14 |
| Flachmutter | Messing, vernickelt brass, nickel-plated | Thin nut |
| Dichtung | NBR | Seal |
| Aufnahme | PA UL94 V0 schwarz / black | Adapter |
| Flanschschutzkappe V14 | PA UL94 V0 schwarz / black | Bulkhead protective cap V14 |
| Fangband | EPDM | Elastic band |
| Abschirmgehäuse (Kupplung) | Zinkdruckguß / zinc diecast | Shielding housing (coupler) |
| Gehäuseoberfläche | vernickelt / nickel-plated | Housing finish |
| Isolierkörper | PA UL94 V0 weiß / white | Insulation body |
| Schirmblech | Neusilber / German silver | Shield |
| Leiterplatte | FR4 UL94 V0 | PCB |
| Oberfläche Leiterplatte | chem. verzinkt / chem. tin-plated | PCB finish |
| Kontaktfeder | Federstahl / spring steel | Contact spring |
| Oberfläche Kontaktfeder | min. 0,8 µm (30µin) Au über / on 1,2 µm (50µin) Ni | Contact spring finish |
| Richtlinie 2011/65/EU (RoHS) | RoHS-konform / RoHS-compliant | Directive 2011/65/EU (RoHS) |
| Umweltanforderungen | | Environmental Requirements |
| Mechanisch | | Mechanical |
| Schocken | 250 ms ⁻² | Shock |
| Schwingen sinusförmig (9Hz - 500Hz) | 50 ms ⁻² | Vibration sinusoidal (9Hz - 500Hz) |
| Schutz vor Eindringen | | Protection against Ingress: |
| Eindringen von Teilchen | IP6X * | Particulate ingress |
| Wasser / Untertauchen | IPX7 * | Water / Immersion |
| Klimatisch und chemisch | | Climatical and Chemical: |
| Umgebungstemperatur | -40°C bis / to +70°C | Ambient temperature |
| Rascher Temperaturwechsel | -40°C bis / to +70°C / 25 cycles t=30min | Rapid change of temperature |
| Feuchte Wärme | +25°C / +65°C / 93% RH // -10°C / 21 cycles | Climatic damp heat |
| Strömendes Mischgas | +25°C / 73% RH / 4 days H ₂ / SO ₂ | Flowing mixed gas |
| Salzsprühnebelprüfung (NSS Prüfung) | +35°C / 4 Days 5% NaCl | Neutral salt spray test |
| Elektrische Eigenschaften | | Electrical Characteristics |
| Kontaktwiderstand | ≤ 20 mΩ | Contact resistance |
| Isolationswiderstand | ≥ 500 MΩ | Insulation resistance |
| Spannungsfestigkeit | | Voltage Proof |
| Kontakt-Kontakt | ≥ 1000 V, DC | Contact-Contact |
| Kontakt-Schirm | ≥ 1500 V, DC | Contact-Shield |
| Strombelastbarkeit bei 50°C | 1 A | Current-carrying capacity at 50°C |
| PoE gemäß IEEE 802.3at | Geeignet für Power over Ethernet Adequate for Power over Ethernet | PoE according to IEEE 802.3at |



* Die technischen Angaben gelten für das Zusammenwirken von Produkten mit **STEADYTEC**[®]-Technologie und den dort gezeigten IP67 Stecker- und Flanschpaarungen.

* Technical data apply to products with **STEADYTEC**[®] Technology and the appropriate combinations of IP67 plugs and flange sockets.

| | | | | | | |
|------------------|-------------------------------|-------------|---|---|----------------------------|--|
| Änd./ rev. index | Änderungs-Nr. / revision code | Datum/ date | Name/ name | Datum/ date | Name/ name | Gewicht/ weight [g] |
| | | | | 14.06.2011 | AS | |
| | | | | 12.07.2011 | SK | ca./approx. |
| | | | Maßstab/ scale | Benennung/ title | |  |
| | | | 1:1 | STX V14 central bulkhead set RJ45 coupler Cat.6 Class E _A M | | |
| | | | untst. Maße/ dim. without tolerances according to | Untert./ doc. type | Zeichnungsnr./ drawing no. | |
| | | | | D | J80020A0012 |  Maße/ dimensions: mm |
| | | | Ersatz für/ replaces | | | Original : DIN A4 |
| a | 26601 | 04.03.2015 | AS | | | Blatt/ sheet 3 von/ of 4 |

| | | | |
|--|---|--|--|
| Transfer-Impedanz | | Transfer Impedance | |
| Bei 1 MHz | ≤ 100 mΩ | At 1 MHz | |
| Bei 10 MHz | ≤ 200 mΩ | At 10 MHz | |
| Bei 80 MHz | ≤ 1600 mΩ | At 80 MHz | |
| Übertragungstechnische Eigenschaften ** | | Transmission Performance ** | |
| 10 Gigabit Ethernet gemäß IEEE 802.3an | geeignet für 10 Gigabit Ethernet Adequate for 10 Gigabit Ethernet | 10 Gigabit Ethernet acc. to IEEE 802.3an | |
| Klasse E _A (Channel) | ISO/IEC 11801; DIN EN 50173-1 | Class E _A (Channel) | |
| Kategorie 6 | ANSI/TIA/EIA-568-C.2 | Category 6 | |
| Normen | | Standards | |
| IP-Schutzarten | IEC 60529 | Degrees of protection provided by enclosures (IP code) | |
| Anwendungsspezifische Kommunikationskabelanlagen | Profinet Installation Guideline | Custom-designed cabling systems | |
| Anwendungsneutrale Kommunikationskabelanlagen | ANSI/TIA/EIA-568-C.2 ISO/IEC 11801 EN 50173-1 ISO/IEC 24702 DIN EN 61918 | Generic cabling systems | |
| Zulassung | | Approval | |
| 3P Third Party Testing Typmusterprüfung | Attestation of Conformity No.107526 ISO/IEC, EN & TIA/EIA Screened Class E / Category 6 Three Connector Permanent Link | 3P Third Party Testing Type Approval | |
| 3P Third Party Testing Typmusterprüfung | Attestation of Conformity No.107525 ISO/IEC, EN & TIA/EIA Screened Class E / Category 6 Four Connector Channel | 3P Third Party Testing Type Approval | |
| GHMT Typmusterprüfung | Certificate No. P1756c-07 3-Connector Permanent Link (70m) bis / up to 250MHz (Cat.6) | GHMT Type Approval | |
| GHMT Typmusterprüfung | Certificate No. P1755c-07 4-Connector Channel (90m) bis / up to 500MHz (Cat.6A) | GHMT Type Approval | |

** Für alle aufgeführten Standards gelten die aktuellen und publizierten Ausgabestände zum Zeitpunkt 04.03.2015.
 ** The editions of the aforementioned standards by the time of 04.03.2015 are valid.

| | | | | | | | |
|------------------------|----------------------------------|----------------|---------------|--|---|----------------------------|---------------------------|
| Änd./ rev. index | Änderungs-Nr. / revision code | Datum/ date | Name/ name | gez./ drawn | Datum/ date | Name/ name | Gewicht/ weight [g] |
| | | | | gepr./ appr. | 14.06.2011 | AS | |
| | | | | | 12.07.2011 | SK | ca./approx. |
| | | | | Maßstab/ scale | Benennung/ title | | |
| | | | | 1:1 | STX V14 central bulkhead set RJ45 coupler Cat.6 Class E _A M | | |
| | | | | untot. Maße/ dim. without tolerances according to | Untert./ doc. type | Zeichnungsnr./ drawing no. | |
| | | | | D | J80020A0012 | | |
| | | | | Ersatz für/ replaces | | | |
| | | | |  | | | |
| | | | | | | | |
| | | | |  Maße/ dimensions: mm | | | |
| | | | | Original : DIN A4 | | | |
| | | | | Blatt/ sheet 4 von/ of 4 | | | |

